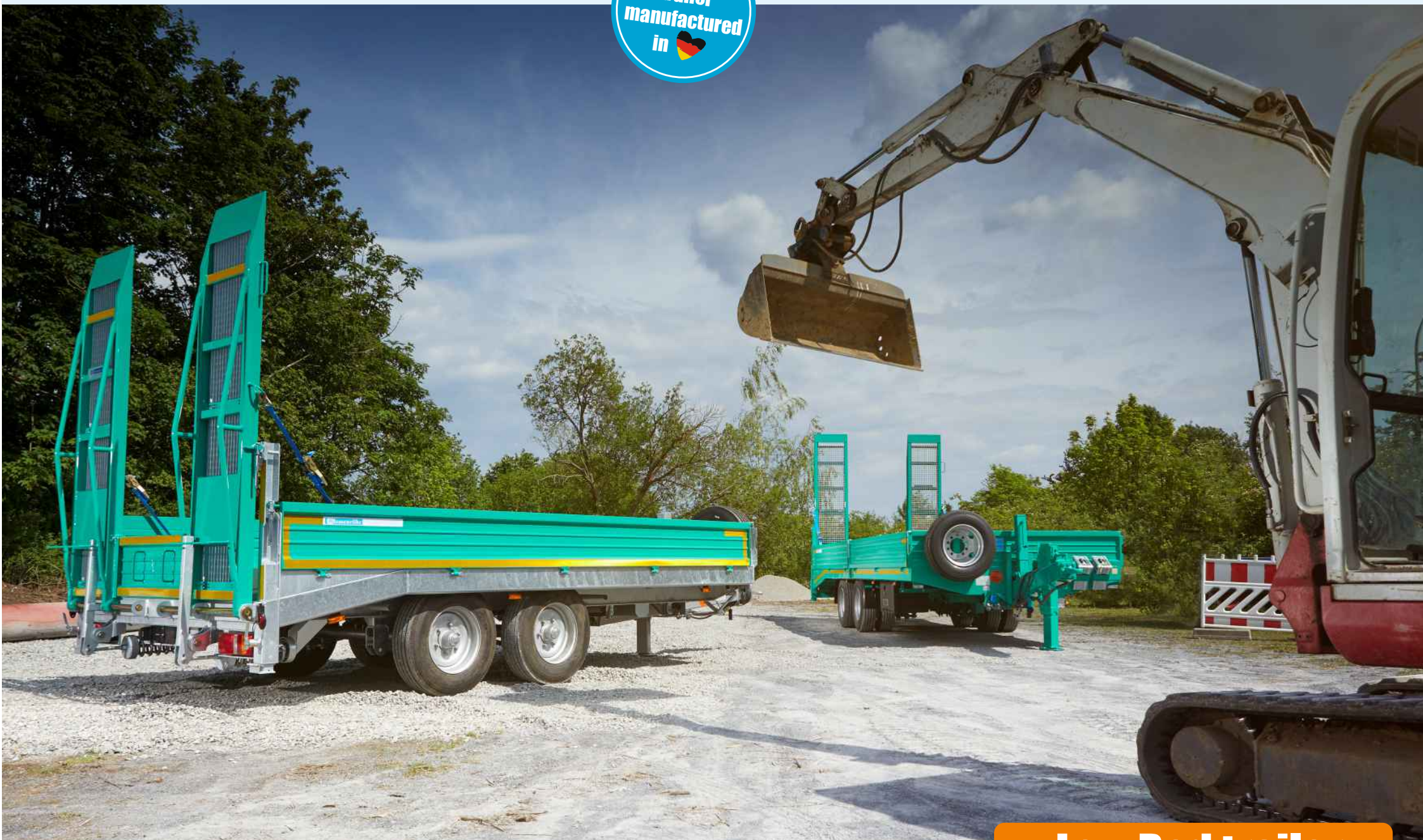


# Time to make a change !

Your  
trailer  
manufactured  
in 

**Blomenröhr**  
Ihre innovative Anhänger Manufaktur



**Low Bed trailer**



## The plus points of Blomenröhr low bed trailers:

- 1 The stable loading ramps are equipped with a joist. This ensures a high load capacity (> the payload of the low-loader) and stability
- 2 The ramps can be adjusted sideways
- 3 Telescopic parking supports with support leg locking device, reinforced from 18 tons GW
- 4 The spring lifting gear attached under the loading area requires very little maintenance and is easy on the back to operate (> 10t GG)
- 5 The tapered rear of the loading area enables a low drive-up angle for optimal loading and unloading
- 6 High-quality galvanized side wall locks secure ramps and side walls in no time at all
- 7 The corner posts and the triangular sheet metal can be plugged in and ensure an unlimited drive-up width.
- 8 Lights are mounted in the underride guard for protection. LED side, outline and license plate lights
- 9 Laser-welded steel side panels

Low Bed trailer models	645/5000	652/8900	664/11900	674/11900	682/14000	688/18000
Tyres	single	single	single	twin	twin	twin
Total weight in kg	5000	8900	11900	11900	14000/15000	18000/19000
Payload * in kg approx.	3400	6650	9200	9150	10800/11800	14000/15000
Loading area inside in mm *	4000x2300	5000x2450	5000x2450	5000x2450	5000x2450	6200x2450
Loading height unloaded in mm approx. *	810	850	880	850	900	980
Height adjustable drawbar from to*	0,72-1,02m	0,72-1,02m	0,72-1,02m	0,72-1,02m	0,72-1,02m	0,72-1,02m
Ramp lifting support	gas-pressurized	gas-pressurized	spring lifter	spring lifter	spring lifter	spring lifter
floor made of softwood (spruce or larch)	single 34mm	single 44mm	single 44mm	single 44mm	single 40mm	single 50mm
Brake system: Air brake system/ Parking brake	ABS with crank brake	EBS MV with TEM	EBS MV with TEM	EBS MV with TEM	EBS MV with TEM	EBS MV with TEM
TPMS	valve sensors	valve sensors	valve sensors	valve sensors	valve sensors	valve sensors
Suspension *	Parabolic springs	Parabolic springs	Parabolic springs	Parabolic springs	Parabolic springs	Parabolic springs
Diameter draweye in mm	40	40	40	40	40/50	50/50
Rear posts	fixed	fixed	pluggable	pluggable	pluggable	pluggable

\* in standard equipment



Fig. partly with additional equipment. Subject to technical modifications. Specifications without guarantee.

## Standard equipment

Low Bed trailer models	687/21000	689/25000
Tyres	twin	twin
Total weight in kg	21000	25000/28000
Payload * in kg approx.	16800	20200/22500
Loading area inside in mm *	6200x2450 with sidewalls	6200x2550 without sidewalls
Loading height unloaded in mm approx. *	1020/ 900	1040/ 920
Height adjustable drawbar from to*	850/ 1050	850/ 1050
Ramp lifting support	spring lifter	spring lifter
floor made of softwood (spruce or larch)	double 68mm	double 68mm
Brake system: Air brake system/ Parking brake	EBS MV with TEM	EBS MV with TEM
TPMS	valve sensors	valve sensors
Suspension *	air suspension with lifting/lowering	air suspension with lifting/lowering
Diameter draweye in mm	50	50
Rear posts	pluggable	pluggable

\* in standard equipment

### The plus points of Blomenröhr low bed trailers:

- 10 The close arrangement of the cross members and the individual frame production guarantee a high point load and a long service life.
- 11 Chassis: robust welded construction made of sectional steel, all components electrically welded.
- 12 Good load securing: recessed lashing hooks every 0.6/1.2 m incorporated in the side profile.
- 13 Additional lashing hooks in the corners.
- 14 The towing device is infinitely height-adjustable via a winch (adjustment range approx. 0.72-1.02m) (up to 18t GG) or adjustable to two coupling heights (21t/25t)
- 15 Stable landing gear with 12t load capacity with low and high gear
- 16 The stable wooden floor made of spruce or larch with tongue and groove or even with a screen-printed top layer guarantees stability for the highest point loads
- 17 Shorter braking distances and greater driving safety thanks to EBS and automatic parking brake TEM

When towing a 21t/25t tandem or tridem low-loader, **high demands** are placed on the towing vehicle:

- The V and Dc values at the coupling must be correspondingly high.
- The corresponding central axle towing load must be approved.

Contact us!



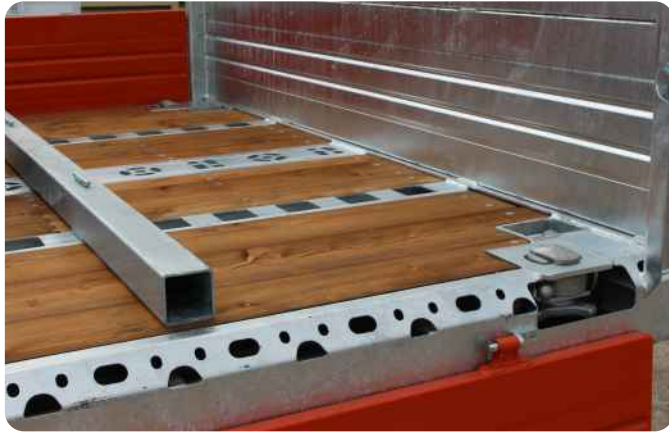
**Tridem model 689/25000 with up to 28t TW and 22,5t PL**

**Tandem Low bed trailer model 687/21000 with 21t GW and 17t PL**



Fig. partly with additional equipment. Subject to technical modifications. Specifications without guarantee.

**Standard equipment**



Outer profile with double perforated pattern "VarioFrame" (2000daN lashing capacity), can be expanded with screw-in lashing brackets (2500daN), TwistLock container locking device and pluggable crossbar stop



Flexible load securing with the center VarioO lashing rail for various sling equipment and the outer profile with double perforation "VarioFrame"



Middle lashing rail on straight loading area with rotatable lashing recesses with 4000daN lashing force, aluminum side panels 40cm high, painted



VarioStake stanchion rails on the loading area and incorporated as a rear end, stanchion plug-in device on the side, VarioFrame outer profile, extendable bumper



VarioSave stanchions (available in different lengths) with stanchion magazine on the bulkhead, steel tool box from our own production with aluminum cover



Stake holder under the loading area with locking mechanism, VarioFrame outer profile

## Load securing - Accessories



Front wall extension made of corrugated mesh, hot-dip galvanized, pluggable, flat-bed loading area with spare wheel and holder; wooden wedge to compensate for the sloping rear



Front wall made of perforated plate, pluggable or fixed; stainless steel tool box attached to the side, divided side panels



Front wall raised from steel drop side, with additional frame extension; self-made steel tool box with aluminum cover



Double storage box mounted in front of the loading area, lower compartment with two doors with locks, upper compartment with aluminum lid to be loaded from above; intermediate floor made of screen-printed plate



Grid gratings in the ramps and access slope, stanchions on the side of the loading area, retractable lashing rings, swivel eye 40/50 mm



Ramps with 3.5t load capacity, for driving onto the towing vehicle, with gas pressure shock absorbers, movable. Only possible with fixed or hydraulically height-adjustable tow bar

## Special equipment / accessories



Closed tail lift with gratings, divided in the middle, tarpaulin cover frame with sliding tarpaulin, interior lighting and rear roller tarpaulin



Hydraulic ramp jacks in combination with an electro-hydraulic compact power unit: double-acting cylinders with check valves are mounted in a protected position under the loading area and connected to the electro-hydraulic pump. The cylinders are operated via the radio remote control. The ramps can be controlled individually or both simultaneously.



24-volt compact electro-hydraulic power unit with 2200W power for operating the hydraulic ramp jacks, incl. radio remote control! Installed in a plastic tool box on the passenger side of the low loader, 2-pin NATO socket attached to the front wall, supply line to the pump.



On 80cm widened ramps with HEGE rubber covering in the middle; telescopic storage for the milling conveyor at the front, HEGE covering also possible in the ramp!



Operate widened and extended ramps with spring lift mechanism, fully collapsible, aluminum drop sides split down the center, with reflective marking



Double gas struts as lifting aids

**Ramps and ramp lifting aids**

Low Bed trailer models with slide-in ramps	692/8900	695/11900
Tyres	einfach	einfach
Total weight in kg	8900	11900
Payload * in kg approx.	6800	9400
Loading area inside in mm *	5000 x 2450	5000 x 2450
Loading height unloaded in mm approx. *	850	880
Height adjustable drawbar from to*	0,72-1,02m	0,72-1,02m
Aluminium slide-in ramps: payload/size	8000kg 3300 x 400	9000kg 3500 x 400
floor made of softwood (spruce or larch)	single 44mm	single 44mm
Brake system: Air brake system/ Parking brake	EBS MV with TEM	EBS MV with TEM
TPMS	valve sensors	valve sensors
Suspension *	parabolic springs	parabolic springs
Diameter draweye in mm	40	40
Rear posts	pluggable	pluggable

\* in standard equipment



## Low bed trailer with slide in ramps

- 1 The close arrangement of the cross members and the individual frame production guarantee a high point load and a long service life.
- 2 Chassis: robust welded construction made of profile steel, all components electrically welded.
- 3 Good load securing: recessed lashing hooks every 0.6/1.2 m incorporated in the side profile.
- 4 Additional lashing hooks/troughs in the corners. Or outer profile with double hole pattern (every 20 cm) possible!
- 5 The towing device is infinitely height-adjustable via a winch (adjustment range approx. 0.72-1.02 m). Stable landing gear with 12t load capacity with load and fast gear
- 6 The stable impregnated wooden floor made of spruce or larch wood with tongue and groove protects construction machines during transport.
- 7 Shorter braking distances and higher driving safety thanks to EBS and automatic parking brake TEM; tire pressure monitoring system with telematics unit
- 8 Aluminum loading ramps with 8/9t load capacity can be slid in under the loading area and are secured against theft by a lockable flap; the ramps are extended on rollers and can be hooked into the shaft at the rear to prevent them from slipping
- 9 Double folding door – the ramps can be hooked into the shaft at any width without laying them down
- 10 Telescopic parking supports with support leg lock
- 11 Corner posts can be plugged in and removed
- 12 Lamps are mounted in the underride guard for protection. LED side and license plate lights
- 13 Laser-welded steel side panels



**Low bed trailer**  
with slide-in ramps



➤ This **combination low-loader** covers many construction applications. In addition to machines and long materials, this low-loader can also be used to transport roll-off containers!

Customized troughs are incorporated into the floor. The hook lift truck reverses up the ramps a little and pushes the roll-off container onto the loading area. The container rollers run along the guide rails (pluggable) on reinforced sheet steel running surfaces and sink into the troughs so that the skids of the container lie flat on the running surfaces. The roll-off containers only need to be secured at the front and rear with lashing chains. At the front, the low-loader is supported on both sides with 12 t geared support winches.

The low-loader can also be equipped with TwistLocks for container transportation!



**Combination low-loader for  
roll-off containers+maschinen**

**Blomenröhr Fahrzeugbau GmbH**  
Schneidweg 31  
59590 Geseke | Germany  
Tel. +49 2942 57997-70  
Fax +49 2942 57997-77  
info@blomenroehr.com    
www.blomenroehr.com